

Yearly Report - 2020



Aloshikha Rajihar Social
Development Centre
Rajihar, Agailjhara, Barisal



MESSAGE FROM THE EXECUTIVE DIRECTOR

This Annual Report contains the performance of the program activities from the period of January to December 2020. We are happy that with the support of our donor, Aloshikha in this reporting period has been able to effectively implement the program activities for the benefit of the poor and marginalized people through the community service delivery. The Aloshikha is committed to continue its support for the underserved and marginalized people especially in the hard to reach areas. It gives me great satisfaction to see that we have been able to serve the most in need people of Bangladesh in the areas of education and reproductive health and vocational training and education and rights. Once again our staffs have shown their dedication and hard work. But we do believe that more efforts need to be done and for this we are constantly undertaking improve projects and initiatives under various programs in response to the needs of our beneficiaries. In order to the all funding agencies and donors are requested to fund us to embark on activities for the marginalized and disadvantaged people who were deprived from services and victims of social inequality.

2020 was a momentous year for Aloshikha RSD Center Bangladesh. Just we celebrated 36 years of operations from our inception, and that has been a challenging journey, with active support from the people of the southwest region and generous support from development partners. We have made significant differences to the lives and landscape of this disadvantaged region.

I also wish to recognize the sincere and dedicated services of our staffs of the Headquarter and the Branch Offices for successfully implementing the program activities.

James Mridul Halder
Executive director.

Geographic Context



Where Aloshikha works in Bangladesh

**Welcome to Aloshikha RSD Center Bangladesh.
Annual Report – 2020**

Introduction

The Aloshikha RSD Center is now just acting as windows on applied knowledge and provides links to sources of information. It is working harder exclusively in rural areas; the greater numbers of households and people have been involved in water and sanitation, vocational training and education, hospital for health promotion, closely followed by environment and forestry, fisheries and micro credits, providing small loans. In recent years, the donor has initiated several development projects addressing issues of coastal zone management and targeting programs to enhance livelihoods of the coastal population and trying out to empowering vulnerable rural poor women groups with economically empowered by transferring asset and shops for alternative income generation and self-employment.

Empowering the rural poor is a prerequisite for sustainable development and exercise of their rights. It requires challenging exclusion, discrimination and exploitation of and against the landless, women, indigenous people and other dispossessed. The Aloshikha RSD Centre Bangladesh is a professionally managed not for profit making charity based social development organization, registered with the social welfare ministry, NGO Affaires Bureau, micro credit regulatory and also affiliated by the ministry of health and family planning department in Bangladesh. The Aloshikha is committed to address various social and economic problems of the economically depressed and vulnerable groups in general. Empowerment of communities is a central focus issue of all Aloshikha development initiatives. Over the years, the organization has extended its geographical, beneficiary and programmatic coverage quite significantly. The long term development program now includes education both non formal and vocational training education, micro finance, poultry and fishery and water supply and sanitation. All this work is aimed to provide support to disadvantaged poor people. Over the year we have to face many difficulties and challenges with political unrest and natural disaster as well as financial constraints.

By the late 1995 an integrated comprehensive program superseded its sect oral work, focused on concentrated group organization of the poor, emphasizing social, education and economic elements. Since the Aloshikha successes have included the community based health and sanitation program to improving life on the out reach and remote villages are raising awareness of women rights and women empowerment, promoting savings, credit and skill training to improve the livelihoods of the poor section of the community. The Aloshikha program continues to evolve and innovate; current realities mean the program now comprises a range of various projects and financing large and small, which all contribute to a common objective. However, we are always encouraging to the local communities to developing all form of education in general or vocational education that could be make them smart and expertise to engaged any job or self supportive or self-employments.

The work area of Aloshikha RSD Center is located in southwestern Bangladesh, where the rivers Padma (called Ganges in India) and Jamuna (called Brahmaputra in India) merge into the Meghna river. The range of branches of these rivers form one of the largest deltas in the world. Floods are an annual phenomenon, making the area difficult to access and economic activities are hindered. Aloshikha has grown into a well-known local organization that tries to support the poorest in society by providing education, health care (including water and sanitation), and micro-credits for setting up small-scale economic activities. The working area of Aloshikha is in the districts Gopalganj, Barishal and Madaripur. In order to support outreach and all development activities, Aloshikha has established branch offices in four locations. In addition Aloshikha has established small community centers (PRIMA) where there is a class room for a pre-school and small office space for health education and micro-credit activities.

This report is a testimony to the fact that with a synergetic approach towards development with support from the donor community and the local people a lot can be done to improve livelihoods.

Aloshikha Mission statement:

Aloshikha is a Bangladeshi non-profitable humanitarian non-government organization supporting the holistic development of poor and landless people in the rural marshlands between Gopalganj, Madaripur and Barisal.

Aloshikha will support the development in the following ways:

- Education (elementary, vocational & food for education)
- Health & Nutrition (Clinical & PHP) (Traditional Birth Attendance) Family planning
- WASH (Hygiene & Sanitation) DTW (Safe drinking water) and distribute sanitary latrine.
- Protection (Women empowerment, Adolescent girls, SGBV activities and referral system Development)
- Income generation activities (IGA) (Poultry, Fishing , Dairy & milk production etc)
- Solar Panel System as Alternative Energy Sources
- Tribal Empowerment through Education and IGA
- To create awareness on the importance of child and blow education among local people.
- To create awareness on health, sanitation, women development issues and community problems To organize targeted poor people in small groups and make them skilled through education, trainings workshops and meetings etc.
- To encourage and motivate poor people to take steps to reduce their problems, improve their health conditions and their income.
- To encourage and support the poor people to start their own activities in order to create their own income, so that they will become self- sustained.
- To provide among children and their development through nutrition coverage, child health education, nutritious food, creativity materials etc.
- To provide the safe water supply for hygienic health through the DTWs and distribution sanitary latrine to the community people as sanitation coverage.
- To encourage and convinced the community people to provide renewable energy as solar system technology for alternative electricity.
- To create employment opportunity and job replacement among the local unemployed youth both the girls and boys and to export skill work force to the international labor market a vocational training center has launched in the Aloshikha complex.
- To encourage the local people to change their present situation.
- Aloshikha has a orphan in the campus area and Aloshikha work for them
- Aloshikha works for disability people

Women Empowerment:

The situation of women in Bangladesh is still one of insecurity, low social status and economic dependence. But many women believe in equality, equal rights, freedom from violence, free choice and full participation in all areas of society, political and work should be more than just dreams. The Aloshikha agrees and actively promotes women and women's issues in everything. Areas of concern for poor rural women include: their legal rights, gender equality at family and community level: domestic violence: sexual harassment and rape: reproductive health provision, trafficking of women and girls and migrant women, early marriages and dowries. Awareness raising, advocacy campaigns and practical projects are carried out across the spectrum stakeholders.

Promotion of Self Migration and Rights:

The program particularly focused on promotion of self migration and rights of Bangladeshi migrants workers: pre-departure, post- arrival and reintegration assistance for migrants to the Middle East countries. The program aims to establishing of pre-departure services and assistance in destination countries and upon return for Bangladeshi migrant workers and their families, including awareness rising on safe migration and prevention of undocumented migration in Bangladesh society in general. The main objective of this program is to promoting supportive environment for migrant workers and their families at all stages of migration with regards to respect for the rights and dignity.

Special events in 2020

1. Sako Board Member Visit to Aloshikha

On 29th January 2020 5 members from the Board member of SAKO from Netherland paid visited Aloshikha to look after VTC programs and had a meeting with VTC staffs, discussed with technical trade course curriculum and facilitated English session and tested the students on their proficiency on English. They expressed their satisfaction on the VTC program and committed to the VTC staffs to visit on each year to Aloshikha. The thanked everyone including the Executive Director of Aloshikha and wish success of Aloshikha.



2. Visit of Stichting Brandwonden Aloshikha Netherlands

Dr. Peter and Dr. Robin along with his colleagues visited the Aloshikha Hospital and provide free treatment on burn, tumor and other surgery for the poor. Dr. Marlin Mimi from Bangladesh guided the team for their activities and act as their assistant for the surgery at Aloshikha hospital. They stayed in Bangladesh for 2 weeks from 11th February 2020 and give treatment to 1200 poor people, do the follow-up, and distribute free medicine and local transport cost. They also committed to pay visit Aloshikha every year, however due to COVID 19, they could not come this year. The community people benefitted from the free treatment and surgery services as each tumor operation required 30000-40000 (400-500 USD) taka as cost.



4. Visit of Mr. Thomas and Lau on 26 December 2020

Mr. Thomas Leung (Managing Director, New Century Fleece (BD) Ltd.) along with his colleague Laurie Lau from Hong Kong paid visit to Alosikhya all programs including VTC, Hospital, Schools, Orphan Home, and Agriculture program on 26 December 2020. They were excited while visited the Orphan home, distributed 40 school bags among the children and donated 10,000 taka and committed to donate a fixed amount as subscription for the Alosikhya Orphan home on end of December of each year for the welfare of the orphan children.



5. Covid-19 Relief Distribution Program:

In the lockdown period of COVID 19, Alosikhya distributed food packages among 1,230 families of students and teachers of Alosikhya schools to protect them from vulnerability of COVID- 19. They were benefited as received the food packages, as majority of them remained unemployed at that time and has less food to survive. These food packages distributed from different school centers. The items included in each packet were: rice, pulses, salt, spices, soap, and 20 facial masks. The Covid-19 Relief Distribution Program was supported by SAKO Foundation, Wilde Ganzen, and a part of SK Foundation.



6. VTC Equipment Purchases:

For providing modern and updated technical training to students, Aloshikha purchased different types of equipment for the first priority with the support of **SAKO Netherlands and Wilde Ganzen**. Aloshikha purchased machineries and equipment purchased for welding, electrical, mechanical and science lab etc. The addition of these equipments and tools helped a lot to students receive modern and demand oriented technical education and the institution became renowned for such initiative in the district. Now, we are requesting for 2nd priority from SAKO Foundation and Wilde Ganzen.



7. SAKO Partner Meeting:

On 30 January 2021, on Aloshikha premises, SAKO partners meeting was held with the partners Aloshikha, SDS, BVDO, and Dhara and discussed to sit once in a year for a partner meeting, and evaluation of partners programs and sharing knowledge with others to improve their program delivery mechanism for the welfare of the community.



7. Deer conservation program

Md. Abul Hossain, Inspector and Research Officer of Department of Wildlife Animal Conservator, Bangladesh Government has exclusively visited Aloshekha on September 2020, particularly the Deer Conservation Program. After close scrutiny and necessary desk works, he issued a Firm category license to Aloshekha. Initially they given an individual license when start up the program where to be scope of reared up only 10 deer according to the rules of license. Currently the Firm has 17 deer with heavily protection around the wire net boundary and has an excellent proper scientific management and treatment and care.



A Case Study of Chandrika

Ms. Chandrika Baroi, is currently working as Aloshekha school for 17 years at Noiyerbari preschool. He lives with her husband Bhudev Baroi and two daughters and twin boys. Her husband was a day labor, and has small piece of land. Their earning is very little. To bring family solvency, Chandrika started rearing chicks and ducks at her home yard. She sell the eggs and chickens and purchased 20 decimal land from her income, and continued the child education. Her elder daughter read in class six, another one in class five and twin boys read in Aloshekha pre-school. Everyone praised her activities, and she encouraged other as well. Everyone knows her as a good teacher. Aloshekha gave her relief in COVID-19 as support. She and her family expressed gratitude to Aloshekha for such help.



Integrated Rural Health Support Programme



Visit to Nutrition camp

A team on 29th January 2020 visited Aloshikha RSDC Center to monitor the child health care and nutrition camp. The program is funded by the SAKO Foundation the Netherlands, which continue to help us to work for health motivators to address the plight and problem of child health care services at field level. In the light of their visits to take the feedback of the community based health activities through field visits with health motivators and organizing the nutrition camp in the village. This year Aloshikha was organized 10 nutrition camps at different villages among malnourished babies where 300 malnourished mothers were present during nutrition camps. Aloshikha motivated to the mothers about the cause malnutrition and its consequences.



Green vegetable are processing before



Nutrition camp

Pre-school program

For last 28 years, Aloshikha is operating 41 pre schools in the different part of the Barishal, Gopalganj and Madaripur district. According to provision of the project every preschool have 30 children age about 5 to 6 and course duration of two years only. It is estimated that after two years of learning about 600 children able to admitted to the government primary school. During the learning period children were better informed about their rights and abuse and child labor and trafficking and related issues. In our 41 pre-school a total of 1230 children were enrolled every day during school period. They also get free medical checkup and quality sanitation and hygiene facilities and nutritious feeding facilities.



Aloshikha pre-schools & Kindergarten information at a glance (2016-2017-2018-2019-2020):

| Year | 2016 | 2017 | 2018 | 2019 | 2020 |
|-----------------------|------|------|------|------|------|
| Pre-schools | 41 | 41 | 41 | 41 | 41 |
| Pre-school students | 1230 | 1230 | 1230 | 1230 | 1230 |
| Kindergarten (School) | 3 | 3 | 3 | 1 | 1 |
| Kindergarten students | 327 | 327 | 235 | 235 | 235 |
| Kindergarten teachers | 21 | 21 | 21 | 21 | 21 |
| Pre-school teachers | 41 | 41 | 41 | 41 | 41 |

Mary Orphan Home (Middle Rajihar)

Primarily the Mary Home started its journey in the year 2014 with only 10 helpless street children and later it has included another 23 children and it means now 37 (boys 27 and girls 10) children are residing in the Home and receiving the services. Most of them are age about not more than 6 years and some of children not have their mother or either father or some cases they lost their parents. In the light of that, Alosikhha RSD Centre has adapted this specialized initiative to ensure their rehabilitation including education, health and create employment opportunity in ebullient future. Currently all children are studying in the Maria Child Care School which are also operated and guided by the Alosikhha RSD Centre. Mrs. Martha Halder, one of the dedicated social worker of Alosikhha thought first to take some initiative to established them in the loop of the mainstream of our society through different services. Currently 30 children are from Chittagong Hill tract zone and 7 children are from different places of Barishal and Kotalipara. Apart from this, many of the children are coming every year from different geographic part of the country to this home but which is beyond the capacity of Alosikhha to received due to financial constrain and lack of other support. Merely as a private sector initiative, it would not been possible in meeting up the huge expense of study, dress, treatment, food and shelter etc. support that we have to endure since 2014 -2020. In this respect, we are earnestly requesting to extend helping hands for kind hearted man who is like to support us from regional, national or international levels.



Education program (Kindergarten school):

We felt that education is important for all and without education none can take part to the nation building process. It is crucial that quality children education means the Kindergarten education. The Kindergarten education system is costly rather than government primary education in rural context. The Aloschikha has started initially one kindergarten school on its campus; eventually it established three kindergarten schools in different places which are run by local supports. The main focus of the program is to ensure quality education and include creativity activities on regular basis for their cognitive development. A parents meeting was held on school premises yearly 3 times in this year with a view to how they achieved quality education. In Bangladesh all the Kindergarten schools are mainly academic oriented and we put little emphasis on extracurricular activities among the students like painting, drawing, cultural programs on occasion of Independence day, victory day, Bangla new year etc. In addition the organization has able raise voice against the child abuse and child trafficking and their rights, road safety and to promoting their cultural heritage.



Rajihar Kindergarten School Student

VTC Program

The Alosikhha RSD Center is operating one vocational training center within its complex. The main focus of the program is to create job replacement among the rural unemployed youth, both girls and boys. Until very recently, the Center has affiliated with the Bangladesh Technical Education Board (BTEB) as an SSC Vocational Course. In respect of only four trade courses are activating, such as Mechanical, Welding Fabrication, Tailoring and dress making, and Electrical. Out of welding trade, other three trades have been approved by the Bangladesh Technical Board. According to the requirements and curricula of the technical Board, every trade course has 30 students, both girls and boys. The center has been able to convince the local unemployed youth that vocational education is only the resource for income-generating processes and job facilities at national and international labor markets. The Alosikhha Vocational Training Center is duly affiliated by the Bangladesh Technical Education Board. The Board has the responsibility to support the center as to their provision of logistic and other support. In view of book distribution, it has been completed among students of the vocational training center recently.

The SAKO foundation chairman recently paid a visit to Alosikhha VTC and distributed books among the students. The board members of SAKO also conducted training for the students on English. The students' gifts and photos were presented on their farewell by the ED of Alosikhha.



Book distribution ceremony



2nd Term Examination 2020



Fishing program



The fish play an important role in the Bangladeshi diet constituting the main and often irreplaceable animal protein source in poor rural households. In the light of the Alosikha has undertaken fish cultivation program in its own water bodies both the high varieties and local indigenous species.

Rice and fish dominate the diet of Bangladeshis to such an extent that the old common proverb “Machee Bhatee Bengali” which can be translated as “Fish and rice make a Bengali perfect” continues to hold true. Fish is an essential and irreplaceable food in the rural Bangladeshi diet. Together with boiled rice, this is eaten at least twice per day with small amount of vegetables and fish make up the typical meal.

Bangladesh is dominated by floodplains and rivers, which are rice ecosystems for fresh water fish. The floodplains which comprise over half of the country, are inundated annually during the monsoon season, and agriculture and natural fisheries complement one another. In the monsoon to post monsoon season (June to November) the floodplains provide an ideal habitat for the wide diversity of wild fish species, whereas in the dry season, the land is cultivated with rice. However, the importance of fish as a rich source of animal protein is well established and this is frequently used to justify fish as a valuable food, whereas very little attention has been given to the role of fish in supplying vitamin A and minerals in the diet. Alosikha has four big ponds, where it culture fishes both for the purpose of internal dietary supply and generating revenue for the organization.

Poultry and Dairy Program:

Poultry

Since 20 years ago Aloshikha inspired to the community people for poultry farm business and it was much neglected business to the community people due to manifold problems such as bad smile from poultry faces, soft meat and only water inside an egg. So, Aloshikha has been achieved stupendous success through motivation and represented to the community people as model that it is a one kind of profitable business. Today there are many small poultry farms are being established surroundings areas behold with attention as model of Aloshikha poultry farm. It is really indeed, that community people have recognized as a pioneer of Aloshikha on poultry business. Presently it seems to be a profit making program since 2000 -2020 by reared up high breed layer hen that were both the purposes table and eggs.



Dairy Firm

The Aloshikha has started its cow rearing program through Dairy Farm concept since 2000 and initially grassing for 10 cows, in view of to ensure pure milk production and sustainable supply to the local community as low cost. Unfortunately the program had not been profit making due to some adverse environment such lack of cow feed and inadequate grass land, low-lying flood prone area and have not seen abundantly high land where cows are grassing freely. In the following reason behind the program will be gradually going to be closedown.



Poultry increasing rate:

| Year | 2016 | 2017 | 2018 | 2019 | 2020 |
|-------------|-------|-------|--------|--------|-------|
| Total eggs | 85000 | 91000 | 102284 | 262090 | 22300 |
| Total Layer | 2400 | 2600 | 1402 | 870 | 650 |

Dairy and milk production:

| Year | 2016 | 2017 | 2018 | 2019 | 2020 |
|----------|------|------|------|------|------|
| Milk kg. | 1800 | 2131 | 991 | 1800 | 2200 |
| Cows | 8 | 8 | 4 | 4 | 10 |
| Deer | 22 | 21 | 27 | 16 | 17 |

Maria Mother General Hospital

This hospital grant was awarded from the Japanese Government in late 1997 for infrastructure development and purchase of materials but there had not been included any administrative cost in this grant. Still we are working our activities since over 24 years and all medical accessories using properly. In 1996 in order to reduce the gaps between health services and the community, and to raise awareness amongst the poor of available health program the Maria Mother & Child Health Care Clinic was established and later it comes to be a general hospital with strong referral system in the community of remote village under Barisal district in Bangladesh. During the design process of program staff of this general hospital has able to identify the health problems in the community. It also met with the Upazila health and family planning officer to identify the best approaches to meet the needs these vulnerable populations. Utilizing this community consultation approach that included inputs from local authorities has ensured increased by inform key policy and community makers. Under this project at least 10 female Health Motivators are working in the field levels and they are always active to identified primary health problem and recorded in to referral slips. Patients them take these slips to nearby Maria general hospital are given preferential treatment. For health parishioners, the use of the slips means doctors can quickly identify the issues of concern and more importantly see cases in need of treatment. However the main focus of the program is to provide low cost medical service delivery amongst poor section of people in the intervention areas, especially who are not able to access health services due to their acute poverty and adverse surroundings. In that case the health motivators take the responsibilities to identify gaps between the clients and provide them counseling what they should be done during pregnancy if any complicated have seen. They also to be active to provide how they reach postnatal and antenatal care and all sorts of primary health care services amongst poor community. Finally the hospital is registered with the Ministry of Health Bangladesh Government and recognized as 10 beds general hospital.

The above circumstances were the main reasons for Aloshikha to start a small hospital with advanced medical equipments and especial attention is given to the health condition of women and children.

This hospital started its services in January 1997 and although it is expected that eventually the hospital will be self-sustaining in the long run but it is impossible to be self-sustaining right from the start. Aloshikha hopes to reach this start of self-sustainability in shortest possible times.

Maria Mother & Child Health Care Clinic services though the trained health providers are as follows:

- a. In door/Out door 24 hours along emergency management
- b. Major/minor operation facilities
- c. Ante-natal, neo-natal and post-natal along incubation facilities
- d. Diagnostics facilities such as Ultrasound, Diathermia, incubator, ECG, X-ray, Blood, urine, stool, sputum etc.
- e. Resistance fund facility for the poor
- f. Patients referral (Ambulance) and out call facilities
- g. Family planning, safe motherhood, breastfeeding, HIV and hygiene counseling
- h. Audio/ Video health conciseness program for out/indoor patients
- i. Especial session on collaboration with the Bangladesh government such as EPT, NID, sterilization etc.



Maria Mother General Hospital patients' statistic:

| Year | 2016 | 2017 | 2018 | 2019 | 2020 |
|----------------------------------------|-------------|-------------|-------------|-------------|------------|
| Female | 1036 | 956 | 707 | 650 | 530 |
| Male | 298 | 289 | 784 | 550 | 390 |
| Child | 307 | 391 | 50 | 100 | 76 |
| Total = | 1641 | 1636 | 1541 | 1300 | 946 |
| Deliveries | 80 | 64 | 17 | 240 | 170 |
| Appendices | 147 | 135 | 49 | 35 | 10 |
| Caesarian | 321 | 316 | 54 | 15 | 140 |
| Minor OT | 30 | 11 | 15 | 10 | 5 |
| Ultrasound through the pregnant mother | 1078 | 909 | 312 | 350 | 290 |

Blanket Distribution

In occasion of winter, to alleviate the sufferings of poor community, Aloshikha distributed more than 100 blankets. With the fund of Mr. Robert of 1 We Netherlands, Aloshikha distributed the blankets among the ultra poor people at Agailjhara, Barishal through comprehensive survey to find out the needy people on December 2020.



Wash Forum

Wash Forum AGM Meeting

Aloshikha has collaboration with the wash Forum different corner membership in our country. With faith, presently they have promoted 15 organization collaboration, in the Wash activities with the individual organization. Recently, WASH the water and sanitation status of the areas and its impact on the community and environment. It organized meeting on January 2020 at Aloshikha to share the progress made and performance done by partner organizations.



NOREC Project

Chairman and Executive Director of Aloshikha went Nepal on January 2020 to attend Technology Transfer workshop, organized by NOREC. The ACN and Aloshikha discussed there to implement project of skill and technology transfer of Aloshikha with the help of NOREC. The ACN will also help to promote health technology transfer or manpower exchange. Though it has been planned to implement the project of such transfer for next three years by signing an agreement, however due to COVID all programs are stuck. If normalize, the project will resume as it planned.



Aloshikha & ACN organization technology transfer Bangladesh and Nepal

Financial report

Financial Report 2020 (No program activities)

| | Subject | Income | Subject | Expenditure |
|---|----------------------|------------------|-----------------------------------|--------------------|
| 1 | Agriculture | | Staff Salaries | 44,28,300/- |
| 2 | (a) Modern Vegetable | 22,700/- | Electricity Bill | 3,64,000/- |
| | (b) Poultry | 17,300/- | | |
| | (c) Fishery | 3,34,000/- | | |
| | (d) Dairy | 17,000/- | | |
| 3 | Donation | 48,50,000/- | Diesel Bills | 8,700/- |
| 4 | Patients | 1,69,000/- | Telephone | 36,000/- |
| 5 | Students | 72,000/- | Maintenance & logistic | 6,45,000/- |
| | Total = | 54,82,000 | Total = | 54,82,000/- |



Executive Director
Aloshikha RSD Centre

Aloshikha R.S.D Center Board and staff

Aloshikha Board

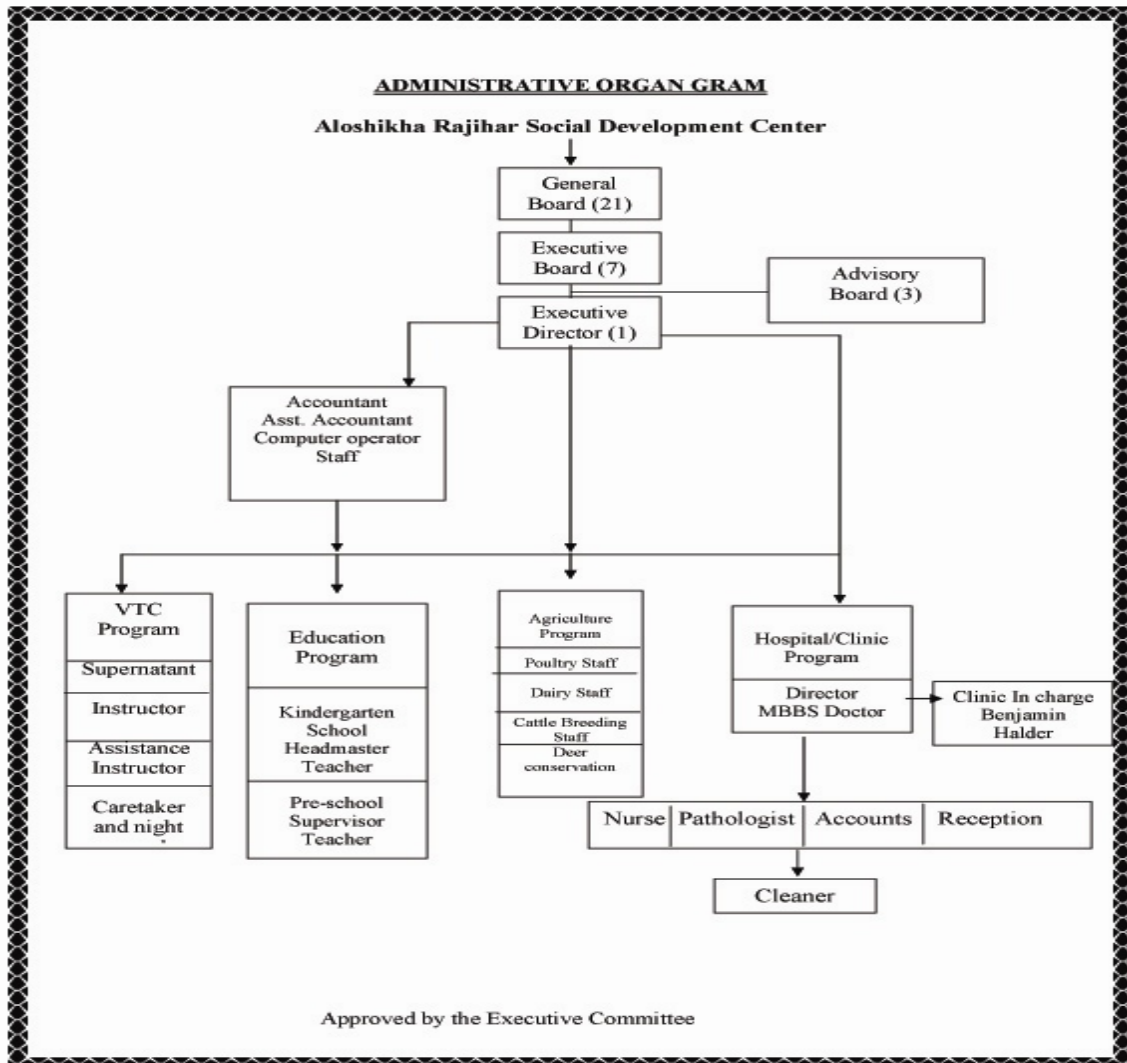
- General board, 17 members
- Executive board, 7 members
- Mr. Swapon Kumar Folia (Chairman)
- Mr. James Mridul Halder (General Secretary)

Advisory Board

- ❖ 3 members:
- ❖ Mr. Joost Verwilghen
- ❖ Dr. Kristofer Johnson
- ❖ Martha Houpt

Donors body

- ❑ SK Foundation, The Netherlands
- ❑ SAKO Foundation, The Netherlands
- ❑ Wilde Ganzen, The Netherlands
- ❑ Japan Embassy, Dhaka, Bangladesh
- ❑ 1We. The Netherlands
- ❑ Private Donation
- ❑ Stichting Brandwonden Bangladesh & The Netherlands
- ❑ NOREC



Staff

| | |
|---------------------------------------|-----------|
| General: | |
| Executive Director | 1 |
| Chief Accountant/Micro credit program | 1 |
| Assistant accountant | 1 |
| Computer Operator | 2 |
| Office assistant | 3 |
| Night guard | 2 |
| Total = | 10 |

| | |
|---------------------------|-----------|
| Education program: | |
| Education coordinator | 1 |
| Pre-school teacher | 41 |
| Pre-school Supervisor | 4 |
| Kindergarten Headmaster | 1 |
| Kindergarten teacher | 7 |
| Total= | 54 |

| | |
|---------------------|----------|
| Agriculture: | |
| Asst. Account | 1 |
| Poultry-staff | 1 |
| Dairy staff | 1 |
| Total= | 3 |

| | |
|------------------------|-----------|
| Clinic program: | |
| Clinic In-charge | 1 |
| Doctor on call | 1 |
| Senior Nurse | 1 |
| Junior Nurse | 3 |
| Medicine salesman | 1 |
| X-ray Technician | 1 |
| Pathology Technician | 1 |
| Sweeper | 4 |
| Total= | 13 |

| | |
|------------------------------------------------|----------|
| Integrated rural health support program | |
| Health supervisor | 1 |
| Health Motivator | 8 |
| Total = | 9 |

| | |
|--------------------------|--------------------|
| VTC Program | |
| Vice principal | 1 |
| Instructor | 5 |
| Ass. Instructor | 5 |
| General Teacher | 7 |
| Caretaker/Night guard | 4 |
| Part time teacher | 4 |
| Total = | 26 |
| (Permanent Staff) | Total = 115 |

(as at December 31, 2020.)

This annual report is a summary of the activities of Aloshikha R.S.D Centre in the year 2020

Head Office

- Aloshikha Rajihar Social Development Centre
- Mr. James Mridul Halder
- Executive Director
- Village & Post: Rajihar
- Agailjhara
- Barishal District
- Bangladesh.
- Mobile: (ISD) 01711-548339, 01715-227525
- E-mail: aloshikha@gmail.com
- Web side: www.aloshikhabd.org.
- Skype: Mridulhader1
- Facebook/Messenger: James Mridul

Communication Office

- ❖ Mrs. Martha Halder
- ❖ 8/Gha Sadhanpara East Rajabazer (1st floor)
- ❖ Tejgoan, Dhaka - 1215
- ❖ Bangladesh.
- ❖ Mobile: 88-01745734843/01711548339
- ❖ E-mail: aloshikha@gmail.com
- ❖ Web side: www.aloshikhabd.org
- ❖ Skype: Mridulhader1

Government Registration

Aloshikha R.S.D Centre is registered with the Department of social service of The People's Republic of Bangladesh

Social Welfare

- ❑ Registration Number 426/1985

Foreign Donation (NGO Bureau affairs)

- ❑ Registration number DDS/FDO/R-324

Ministry of health and family planning

- ❑ Family planning sector (Health ministry) Number – 251/2011
- ❑ Director of general health service, Hospital: Licenses – 3318, Dated: 28/11/2020
- ❑ Director of general health service Diagnosis centre : Licenses – 7083, Dated: 28/11/2020

Bangladesh technical education board (BTEB)

- ❑ (BACKBO (VUK/2011/4076 Dated: 19/12/2011

Deer conservation Farming Registration

- Deer License: 22.01.0000.101.23.2020.1501, Dhaka, Bangladesh. Dated: 4/5/2020

Pador:

Europe aid ID: BD-2011-CYC-2001775404



Alosikhra organized Annual General Meeting (AGM) of 2020 on 1st January, 2021. In the AGM, Dr. Kristofer Johnson expressed his interest to become Alosikhra Advisory member, where all the executive members approved him as the advisory member. Therefore, there are three advisors in Alosikhra Advisory pool: Mr. Joost Verwilghen, Dr. Kristofer Johnson and Martha Houpt. Like other AGM, the board members wish to get guidance from the three advisors for success of the organization, and make it a renowned one.

